

# J&S Chrome Plating Company Bell Gardens

## Field Work Announcement

*It is DTSC's mission to protect public health and the environment from harmful exposure to hazardous substances.*

State of California



California  
Environmental  
Protection Agency



### INTRODUCTION

The California Department of Toxic Substances Control (DTSC) has prepared this fact sheet to announce upcoming field work at the former J&S Chrome Plating Company site located at 6863 East Florence Place in the City of Bell Gardens.

DTSC is beginning with an additional investigation on J&S Chrome Plating Company's North Parcel to better determine the extent of contamination by collecting and analyzing soil samples at the site. Field work is scheduled to begin in September 2001 and will last approximately two weeks.

This fact sheet also includes a brief site history, information about past site history, information about past site investigations, a description of the site evaluation process and other information. Additional information is available by reviewing associated key site documents at the local Information Repositories or contacting DTSC staff. A glossary of terms used in this fact sheet can be found on page 3.

### SITE HISTORY

J&S Chrome Plating Company is adjacent to the former [Chrome Crankshaft Company](#), [Downey Vendors Industrial Property](#) and [Suva Elementary School](#). Environmental investigations and cleanup of the Chrome Crankshaft Company and Downey Vendors Industrial Properties are being addressed separately.

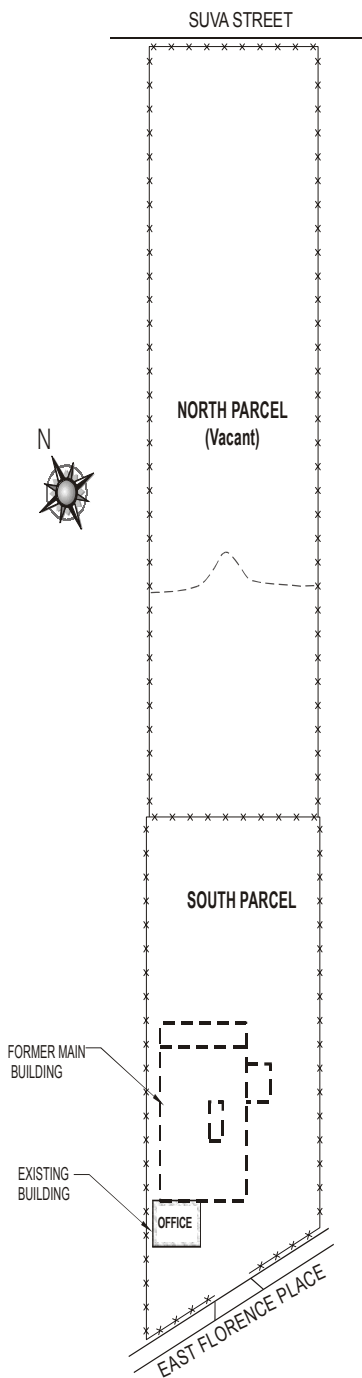
J&S Chrome Plating Company was constructed in 1953 and consisted of a one-story building where electroplating of chrome, zinc, and cadmium was done. Metal plating and cleaning operations involving various acids and alkalines were performed at this site. This site includes two parcels, a North and a South Parcel. The South Parcel is paved and has been the subject of investigation and cleanup activities conducted in the past. Some site investigation of the North Parcel has also been conducted. However, an additional investigation is required to fully characterize the extent of contamination on the North Parcel of the property, which is currently unpaved.

### UPCOMING OPEN HOUSE AND COMMUNITY MEETING ANNOUNCEMENTS

DTSC is planning an open house and community meeting to present information to the public regarding site activities and to receive community questions and concerns. You will be notified of this upcoming open house and community meeting in a future mailing.

For more information on the J&S Chrome Plating Company site activities, please contact Dr. Yasser Aref, DTSC Project Manager, at (714) 484-5349. For information on the upcoming open house and community meeting currently being planned, please contact Ms. Stacey Lear, DTSC Public Participation Specialist, at (714) 484-5354. For information in Spanish, please contact Ms. Leticia Hernandez, DTSC Public Participation Specialist, at (714) 484-5488. For more information about DTSC, please visit our web site: [www.dtsc.ca.gov](http://www.dtsc.ca.gov).

## PREVIOUS SITE INVESTIGATIONS



Several site investigations and some cleanup activities have been implemented at the J&S Chrome Plating Company site. However, most of these investigations and cleanup activities were limited to the South Parcel. Since 1981, in excess of 3,600 tons of contaminated soils have been excavated and disposed of offsite or treated and placed back in the pit on the South Parcel.

A limited soil investigation was conducted under the Regional Water Quality Control Board (RWQCB) on the North Parcel in 1994. Soil samples were collected at the surface and at a depth of 3 feet below ground surface. Results of the limited investigation indicated the presence of metals, specifically hexavalent chromium and cadmium, in soil in this area. Cleanup activities have not been performed in the North Parcel.

To address concerns regarding groundwater, a separate investigation

will be conducted in the near future. DTSC has determined that further study is necessary to fully characterize the types and quantities of contamination present in the North Parcel and to evaluate cleanup alternatives. This phase of the cleanup project is the Remedial Investigation / Feasibility Study (RI/FS). The first step in this process is the field work scheduled for September 2001.

## FIELD WORK ACTIVITIES

Field work on the J&S Chrome Plating Company property will begin in September 2001, and will last approximately two weeks, beginning with clearing away of vegetation at the site. Field work is scheduled to occur Monday through Friday between the hours of 7:00 AM and 5:00 PM. Drill rigs and other heavy equipment will be used to conduct these activities. During scheduled field work operations, a tarp may be placed on the fence surrounding the site to minimize distraction from field work to students attending nearby neighborhood schools. Sampling activities will include collecting soil samples from the site and surrounding residential properties to develop a better understanding of site conditions. The purpose of this field work is to evaluate the extent of soil contamination.

Field work activities will include the drilling of approximately 33 soil borings with samples taken at the surface, and at depths of 4, 8, and 12 feet. Soil samples will be analyzed for hexavalent chromium (chromium 6) and other metals.

A Health and Safety Plan has been prepared to ensure that the onsite workers are protected and to further ensure that adverse impacts to the surrounding community do not occur. It requires protective clothing for the sampling team and air monitoring procedures. Air monitoring procedures will include monitoring the ambient air conditions at the site both before and during the implementation of the above mentioned field investigation.

## SITE EVALUATION PROCESS

The purpose of the Remedial Investigation (RI) is to identify types, quantities, and locations of contaminants onsite. Results of the investigation will be contained in a future RI report. Based on the investigation results, potential health and environmental concerns will be identified. Alternatives for cleanup to address these concerns will be evaluated in a Feasibility Study (FS). After the FS is approved, a draft Remedial Action Plan (RAP) will be prepared summarizing the results of the RI/FS and recommending clean up actions. The Remedial Investigation/Feasibility Study (RI/FS) Work Plan and Health and Safety Plan are available for review in the local Information Repositories.

---

## RISK ASSESSMENT

The Risk Assessment is a document that describes and predicts the degree of possible adverse health effects which may result from exposure to contaminants from the site. The document will be completed using the sampling data and will state the level of risk posed to the surrounding community and environment.

Results of the Risk Assessment will be used to determine the relative importance of pursuing or not pursuing remedial cleanup activities at the site. Additionally, results of the Risk Assessment will be used to assess which specific hazards associated with the site may result in the greatest possible risk to both humans and the environment, and consequently, are in foremost need of cleanup.

The RI Work Plan and Health and Safety Plan are available for review in the local Information Repository.

## GLOSSARY OF TERMS

**Chromium** - Chromium is an industrial metal used in diverse products and processes. It is also an essential human nutrient in minute amounts. Chromium has three main forms: chromium (0), chromium (III) and chromium (VI). Hexavalent chromium is also known as chromium VI or chromium 6. Chromium is used for making steel and other alloys, bricks in furnaces, and dyes and pigments. It is also used for chrome plating, leather tanning, and wood preservatives. Chromium has no taste or odor. Hexavalent Chromium is a known carcinogen that can enter the body through inhalation (breathing), or through ingestion of food or water which is contaminated by the metal.

**Department of Toxic Substances Control (DTSC)** - A department within the California Environmental Protection Agency charged with the responsibility for overseeing the investigation and cleanup of hazardous waste sites. DTSC was formerly the California Department of Health Services, Toxic Substances Control Division.

**Groundwater** - Water beneath the earth's surface that flows through soil and rock openings.

**Health and Safety Plan** - A plan used to describe controls and procedures to implement safety measures that will minimize any incidents, injuries and health risks associated with the field work activities conducted at the site.

**Regional Water Quality Control Board (RWQCB)** - A State agency that maintains water quality standards for areas within its jurisdiction and enforces State water quality laws.

**Remedial Action Plan (RAP)** - A plan approved by DTSC that outlines a specific program leading to the cleanup of a contaminated site.

**Remedial Investigation/Feasibility Study (RI/FS)** - A study to identify the type, size and extent of contamination in the environment (Remedial Investigation) and provide an evaluation of alternatives for cleanup of any identified soil or groundwater problems (Feasibility Study).

**Risk Assessment** - A document that describes the possible and increased possibility of adverse health effects which may result from exposure to contaminants.

**Soil Boring** - A hole drilled in the ground for the purpose of collecting soil samples.

## PUBLIC PARTICIPATION

The Public Participation Program will continue to be implemented during cleanup activities at the J&S Chrome Plating Company site. Public involvement is encouraged by DTSC. The public will be kept informed of new opportunities to provide input into DTSC's decision-making process.

For further information on public involvement opportunities, please call Ms. Stacey Lear at (714) 484-5354.

**FOR MORE INFORMATION**

If you would like additional information about the J&S Chrome Plating Company site, please call the contacts listed below or visit and refer to the documents available at one of the Information Repositories.

**DTSC PROJECT CONTACTS:**

Dr. Yasser Aref  
Project Manager  
(714) 484-5349

Ms. Stacey Lear  
Public Participation  
Specialist  
(714) 484-5354

**DTSC MEDIA CONTACTS:**

Jeanne Garcia  
Public Information Officer  
(818) 551-2176

**INFORMATION REPOSITORIES**

A full copy of the Removal Action Workplan may be reviewed at the following information repository locations:

Bell Gardens Public Library  
Reference Section  
7110 Garfield Avenue  
Bell Gardens, CA  
(562) 927-1309

Commerce Central Library  
Reference Section  
5655 Jillson Street  
Commerce, CA  
(323) 722-6660

Administrative Record Location  
Dept. of Toxic Control Substances  
5796 Corporate Avenue  
Cypress, CA 90630  
Contact Julie Johnson for appt.  
(714) 484-5337

Notice to Hearing-Impaired: You can obtain additional information using the California State Relay Service at 1-800-735-2929 (TDD). Ask them to contact Dr. Yasser Aref, DTSC Project Manager at (714) 484-5349 regarding the J&S Chrome Plating Company site.

**- MAILING COUPON -**

*If you are interested in being added or taken off of the distribution list for mail related to the site, please fill in this mailing coupon and mail it to the address below.*

- Please place me on the distribution list for future materials related to this site.
- Please remove my name from the distribution list.

Name: \_\_\_\_\_

Address: \_\_\_\_\_

Affiliation: \_\_\_\_\_

Phone Number: \_\_\_\_\_

Comments: \_\_\_\_\_

\_\_\_\_\_

\_\_\_\_\_

DTSC mailings are solely for the purpose of keeping persons informed of DTSC activities. Mailing lists are not routinely released to outside parties. However, they are considered public records and, if requested, may be subject to release.

**Please send this mailing coupon to the following address:**

Stacey Lear, Public Participation Specialist  
DTSC, 5796 Corporate Avenue, Cypress, CA 90630



Ms. Stacey Lear  
Public Participation Specialist  
DTSC  
5796 Corporate Avenue  
Cypress, CA 90630